



GRP2612



GRP2613



GRP2614



GRP2615

# New Carrier-Grade IP Phones

GRP2600 series

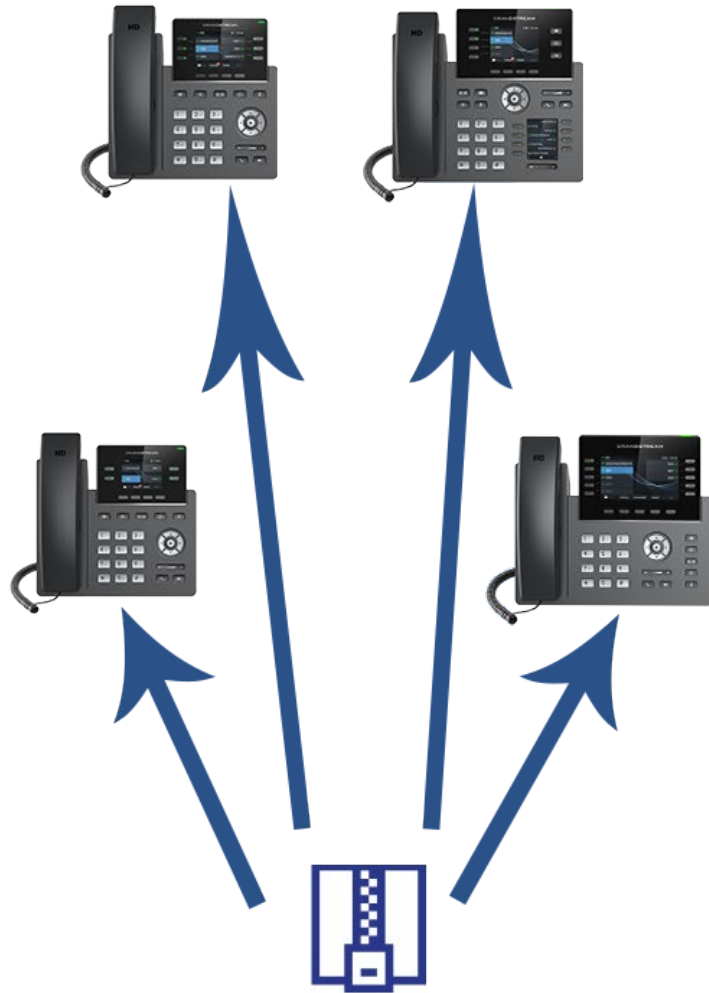
# Product Overview

---



Our carrier-grade line of IP phones delivers a wide range of powerful devices that come equipped with unified firmware. They were made with ITSP and SP mass-deployments in mind. This new line includes:

- GRP2612 – Basic IP Phone
- GRP2613 – Basic-Mid Range IP Phone
- GRP2614 – Mid-Range IP Phone
- GRP2615 - High-End IP Phone
- EXT- IP Phone Extension



Unified Firmware  
Ver. 1.0.1.1

## GRP2600 Series Advantages

---

- Replaceable LCD cover
- UI redesigned for maximum user efficiency
- Can convert other brands' config files (tool)
- United firmware and configuration template
- Dual-image firmware to avoid bricked devices
- Opus codec support (high fidelity wideband/narrowband)
- Alias name-based Config XML
- Grandstream Device Management System support

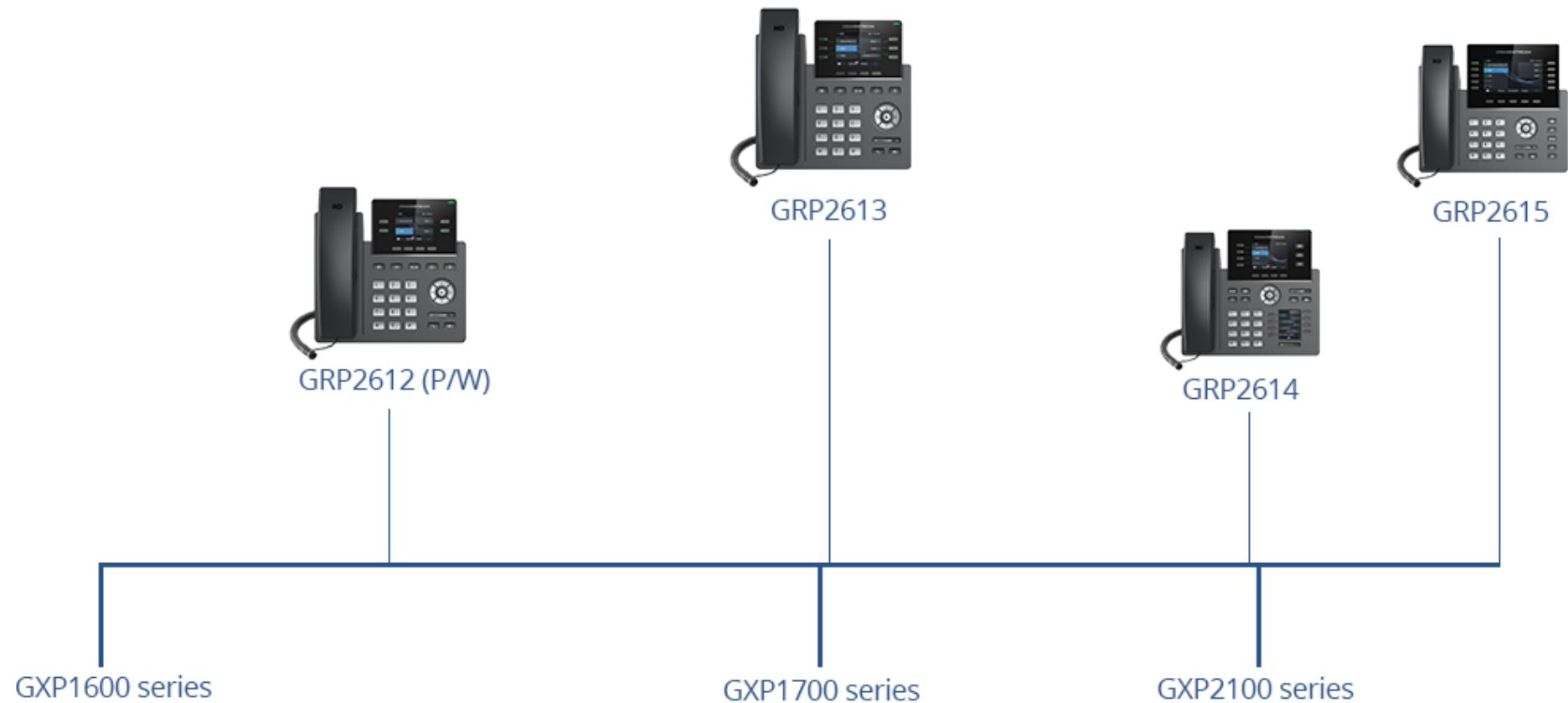


# Product Line Features

---

- Advanced call support
- 2 to 16 SIP accounts, depending on model
- WiFi support on select models
- PoE support/PoE option for all models
- Market leading security and encryption
- Unified firmware
- Opus support

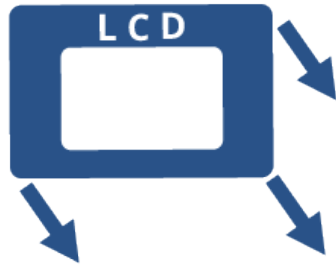
# How this series lines up with other Grandstream IP Phones



# GRP2612 Technical Specifications







# GRP2612 (P/W)

---

## Basic IP Phone

- 2.4" Color LCD screen with 4 programmable soft keys
- 4 line keys and 2 SIP accounts
- 100Mbps network ports with PoE
- Supports up to 16 VPKs (4 pages)
- Phonebook can hold up to 500 contacts
- PoE on GRP2612P, WiFi on GRP2612W
- 128MB NAND Flash storage
- Unified Firmware with the GRP2600 series

# GRP2612 (P/W)

---



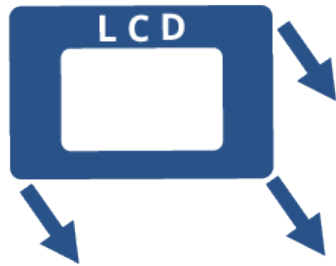
## Basic IP Phone

- Cost-effective option
- Streamlined design enables easy use for occasional user
- Customizable deployments with PoE and WiFi
- Perfect for the low to medium call-volume seat
- Industries that need access to essential telephony support



# GRP2613 Technical Specifications





# GRP2613

---

## Basic-Mid Range IP Phone

- 2.8" Color LCD screen
- 6 line keys, 3 SIP accounts
- Gigabit network ports, PoE
- 4 programmable soft keys
- Supports up to 24 VPKs (4 pages)
- 500 contact phonebook
- Opus support

# GRP2613

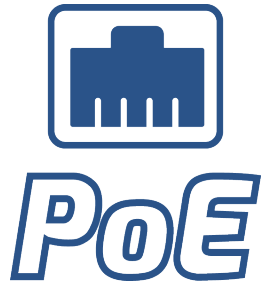


## Basic-Mid Range IP Phone

- Mid-tier deployments
- Gigabit speeds, additional VPKs, extra lines/SIP accounts
- Ideal for seats that handle moderate call volume
- Client focused industries that require frequent telephony access

# GRP2614 Technical Specifications





# GRP2614

## Mid-Range IP Phone

- Dual color LCDs
- 2.8" color LCD for main display
- 2.4" color LCD for BLF/SD display
- WiFi & Bluetooth
- 4 line keys, 4 SIP accounts
- 2000 contact phonebook
- Gigabit network ports, PoE

# GRP2614

## Mid-Range IP Phone



- High-volume seats that require efficient call capabilities
- WiFi and Bluetooth support, 4 SIP accounts, up to 2000 contacts
- Additional BLF/SD screen for efficient call handling
- Industries that require advanced telephony features to stay productive



# GRP2615 Technical Specifications



# GRP2615

## High End IP Phone



- 4.3" Color LCD screen
- 4.3" Color LCD extension module
- 10 line keys, 16 SIP accounts
- Gigabit network port, PoE
- WiFi & Bluetooth
- Optional expansion module
- Opus support

# GRP2615

---

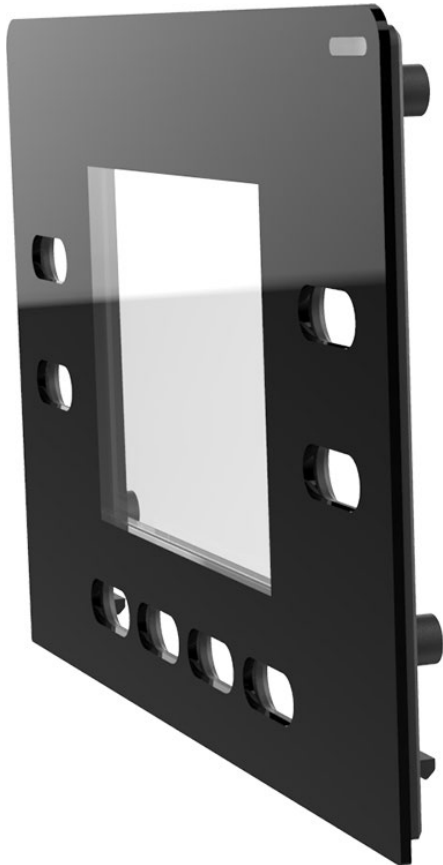
## High End IP Phone



- 4.3" Color LCD screen
- 4.3" Color LCD extension module
- 10 line keys, 16 SIP accounts
- Gigabit network port, PoE
- WiFi, Bluetooth 5
- Optional expansion module
- Opus support

## Swappable LCD Panel

---



# Alias Config XML

```
<?xml version="1.0" encoding="UTF-8" ?>
<gs_provision version="1">
  <mac>000b82000000</mac>
  <config version="1">
    <P1360>download</P1360>
    <P1361>slptestslptest</P1361>
    <P1362>cz</P1362>
    <P1363>10</P1363>
    <P1364>0</P1364>
    <P1465>Dial 1024</P1465>
    <P1466>1024</P1466>
  </config>
</gs_provision>
```

Old Pvalue System

```
<?xml version="1.0" encoding="UTF-8" ?>
<gs_provision version="1">
  <mac>000b82000000</mac>
  <config version="2">
    <item key="provisioning.config">
      <part name="username">download</part>
      <part name="password">slptestslptest</part>
    </item>
    <item key="language.gui">Czech</item>
    <item key="pks.mpk.1">
      <part name="mode">SpeedDial</part>
      <part name="account">0</part>
      <part name="description">Dial 1024</part>
      <part name="value">1024</part>
    </item>
  </config>
</gs_provision>
```

New Alias System

- Existing pvalue (number) based scheme difficult to understand
- Adopting new, widely-used alias configuration
- Will be consistent across all models



# Deployment

---

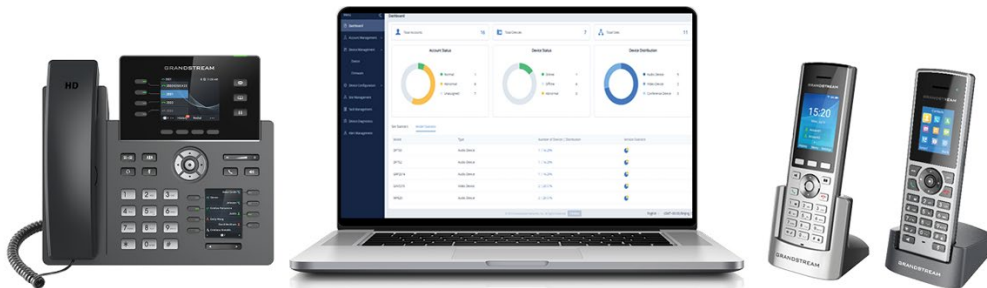


The GRP2600 series was designed to make mass-deployments easy, efficient, and quick, through a unified firmware for all models. It also features alias based configuration XMLs and is compatible with GDMS (Grandstream Device Management System) support.



# Grandstream Device Management System (GDMS)

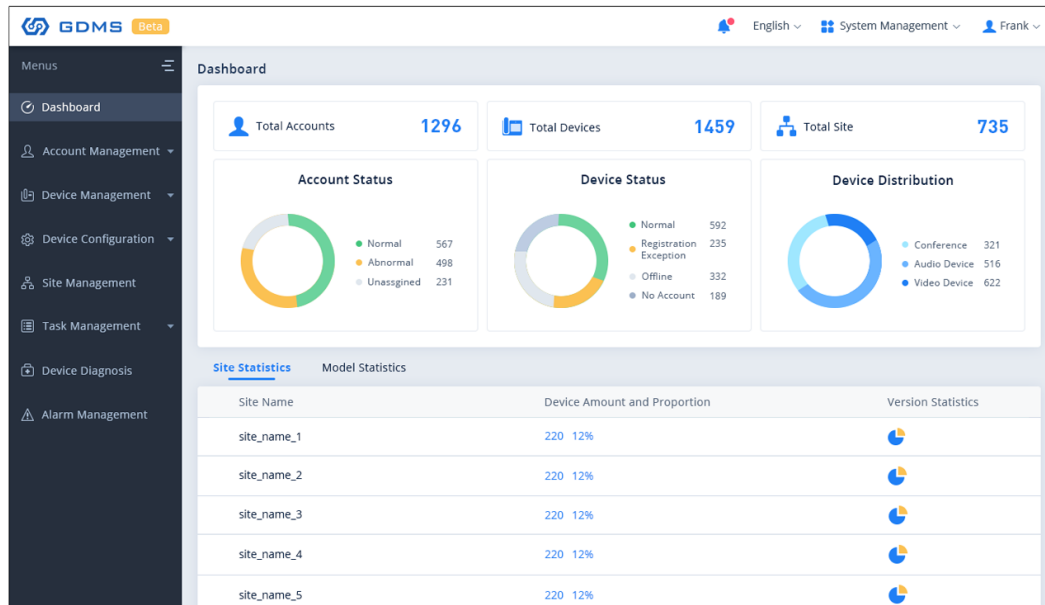
---



## Cloud-Based Device Management

- Statistics to judge device performance
  - UP/down time, SIP account status, call status, DND status
- Call quality reports
  - MOS, package loss, jitter
- Statistics for phone call time, average talking duration, call in/out times
- Everything needed to actively manage and optimize a deployment

# Grandstream Device Management System (GDMS) cont.



- Intuitive debug feature to automatically collect a device's log, capture, traceroute, etc
- Scheduling of automated support tasks for the GDMS to execute
  - Firmware updates, device configs, device restart, factory reset
- Automated alert management
  - Device offline, registrant failure, task failure, unauthorized device modification

# Thank You

---

